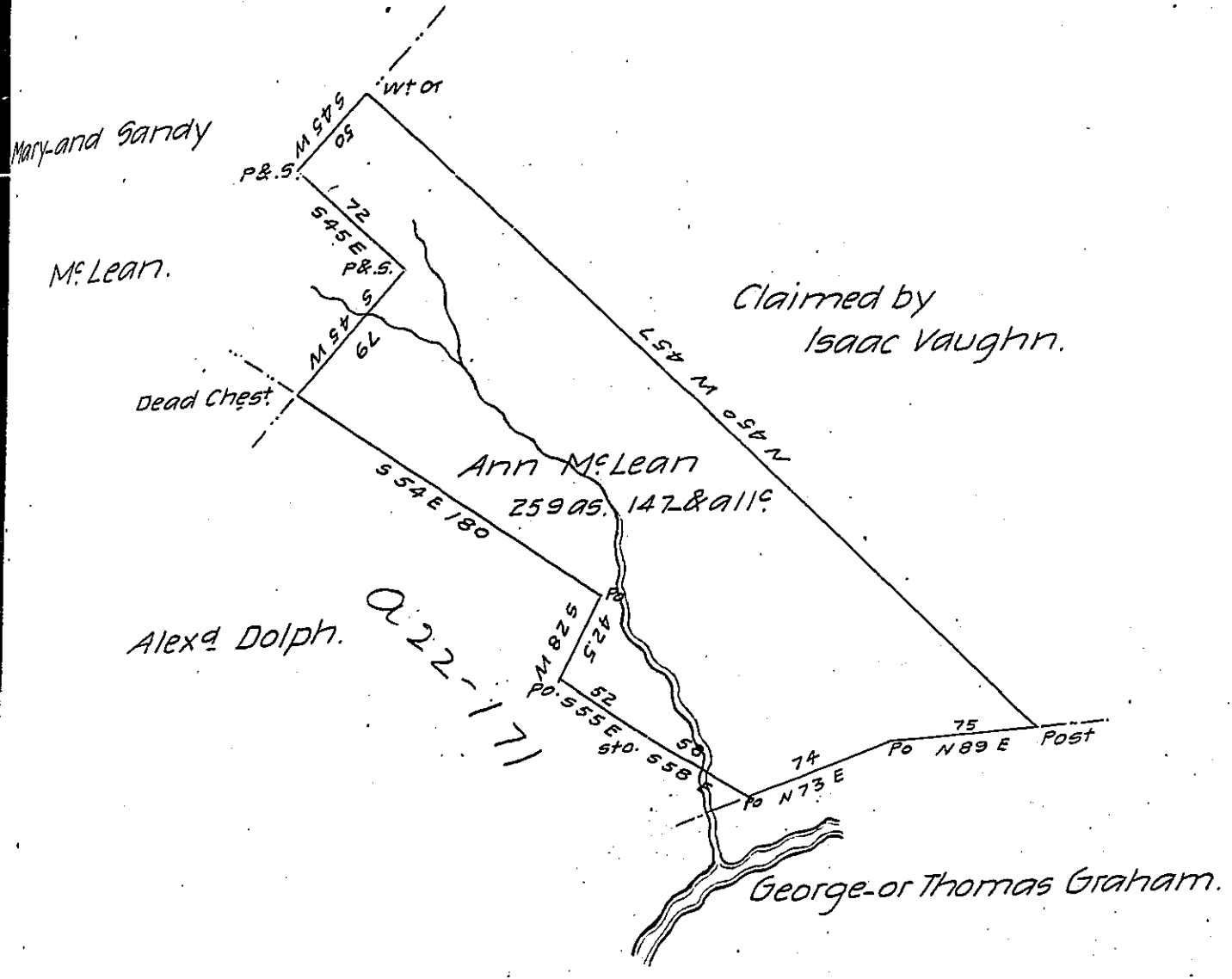


FORM No. 1.



Draft of a tract of Land situate in the Township of Blakely Luzerne County, adjoining Land surveyed to Mary and Sandy McLean, and others, containing Two hundred fifty nine acres one hundred forty seven perches and allowance of Six per cent. &c. Surveyed the above described tract of Land, for Ann McLean the twenty eighth day of January A.D. 1835, by virtue of a Warrant dated the twenty eighth day of September A.D. 1792.

Henry Colt D.S.

*To Jacob Spangler Esqr.
Surveyor General.*

IN TESTIMONY that the above is a copy of the original remaining on file in the Department of Internal Affairs of Pennsylvania, made conformably to an Act of Assembly approved the 16th day of February, 1833, I have hereunto set my Hand and caused the Seal of said Department to be affixed at Harrisburg, this fifteenth day of February 1906.

Isaac R. Brown
Secretary of Internal Affairs.